



**Russell Lane, London, N20 0AZ**

**Asking Price: £595,000**

*Freehold*

## Russell Lane, London, N20 0AZ

Offered for sale CHAIN FREE this two bedroom semi-detached bungalow in need of some modernisation and updating situated close to local shops and bus routes.

Accommodation comprises entrance hall, 26ft through lounge leading to conservatory, kitchen, two bedrooms & three piece bathroom. Externally there is a neatly tended 73ft rear garden with garage and off street parking to the front.

Located moments from Russell Lane's parade of shops and bus routes providing easy access to Oakleigh Park Station & Totteridge underground.

- **CHAIN FREE**
- **TWO BEDROOM BUNGALOW**
- **SEMI DETACHED**
- **POTENTIAL TO EXTEND STPP**
- **OFF STREET PARKING**
- **GARAGE**
- **WELL MAINTAINED FRONT AND REAR GARDENS**
- **CLOSE TO LOCAL SHOPS AND TRANSPORT LINKS**
- **COUNCIL TAX BAND E**



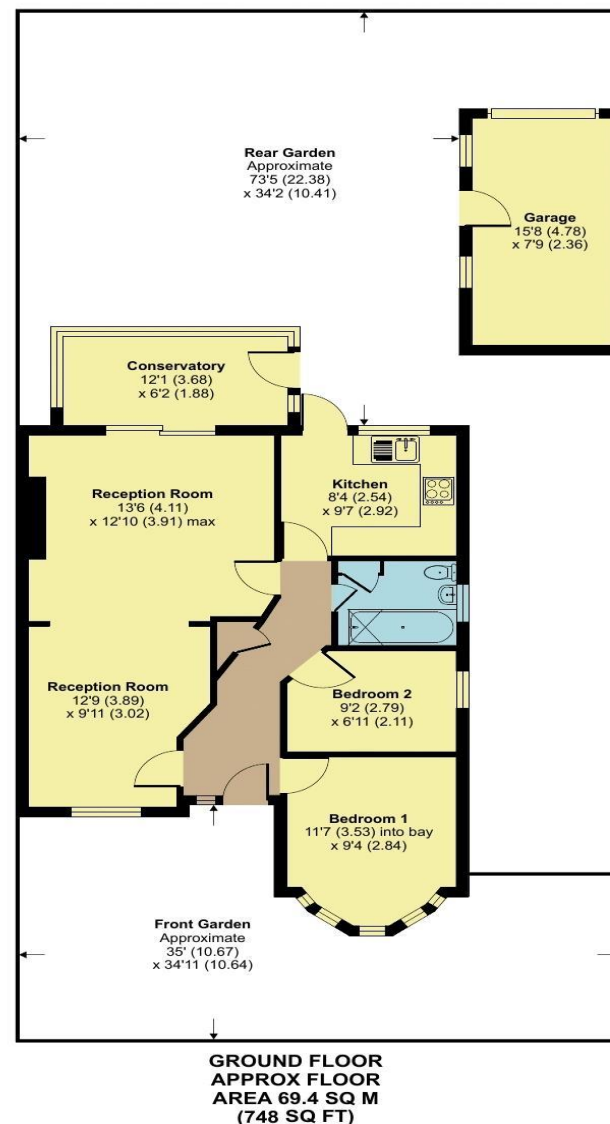
## Russell Lane, London, N20

Approximate Area = 748 sq ft / 69.4 sq m

Garage = 123 sq ft / 11.4 sq m

Total = 871 sq ft / 80.8 sq m

For identification only - Not to scale



Floor plan produced in accordance with RICS Property Measurement Standards incorporating International Property Measurement Standards (IPMS2 Residential). © nichecom 2024. Produced for Hunters - Barnet & Whetstone. REF: 1208454











Score	Energy rating	Current	Potential
92+	A		
81-91	B		82 B
69-80	C		
55-68	D		
39-54	E	49 E	
21-38	F		
1-20	G		

## Hunters Whetstone

99 Russell Lane  
Whetstone  
N20 0BA

T: 020 8368 7138

E: [info@hunters-whetstone.co.uk](mailto:info@hunters-whetstone.co.uk)

[www.hunters-whetstone.co.uk](http://www.hunters-whetstone.co.uk)

### Disclaimer

The agent has not checked any apparatus, fixtures or fittings or services and cannot verify they are in working order or fit for their purpose. Neither has the agent checked the legal documentation to verify the Freehold / Leasehold status of the property. Photographs are for illustration only and may depict items which are not for sale or included in the sale of the property.