



**Jackson Road, East Barnet**

**Offers in Excess of £550,000**

*Freehold*

# Jackson Road, East Barnet, Barnet, Greater London, EN4

A charming two-bedroom semi-detached Victorian cottage ideally situated just moments from the heart of East Barnet Village and within easy reach of Oak Hill Park.

This characterful home offers well-balanced accommodation including two reception rooms, a fitted kitchen, an additional study area, perfect for home working or flexible family living and a lean-to area used as utility room. Upstairs are two good-sized bedrooms complemented by a family bathroom.

To the rear, the property benefits from a delightful 48ft south-facing garden, providing an excellent space for relaxing and entertaining.

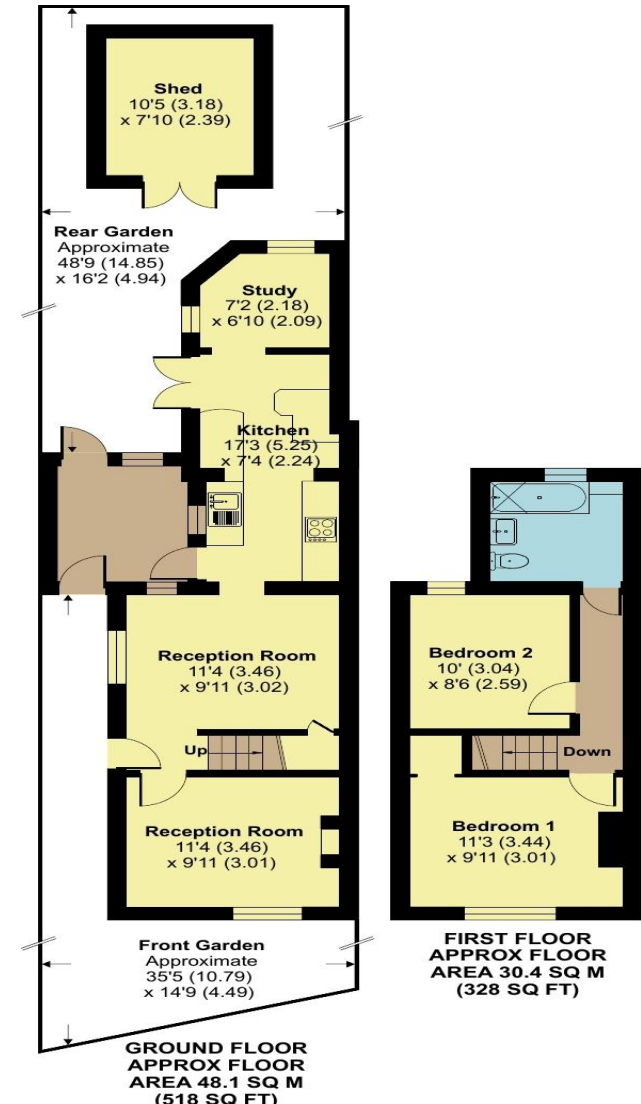
Conveniently located just an 8-minute walk from Oakleigh Park Station, the property offers excellent transport links alongside a wonderful selection of local shops, cafés, and green spaces nearby.

- **TWO BEDROOM PERIOD COTTAGE**
- **SEMI DETACHED**
- **TWO RECEPTION ROOMS**
- **FITTED KITCHEN**
- **ADDITIONAL STUDY AREA**
- **SOUTH FACING GARDEN**
- **MOMENTS FROM EAST BARNET VILLAGE**
- **CLOSE TO OAK HILL PARK**
- **8 MINUTE WALK TO OAKLEIGH PARK STATION**

## Jackson Road, Barnet, EN4 8UU

Approximate Area = 846 sq ft / 78.5 sq m

For identification only - Not to scale













Score	Energy rating	Current	Potential
92+	A		
81-91	B		
69-80	C		77 C
55-68	D		
39-54	E	54 E	
21-38	F		
1-20	G		

## Hunters Whetstone

99 Russell Lane  
London  
N20 0BA

T: 0208 368 7138

E: [info@hunters-barnet.co.uk](mailto:info@hunters-barnet.co.uk)

[www.hunters-barnet.co.uk](http://www.hunters-barnet.co.uk)

### Disclaimer

The agent has not checked any apparatus, fixtures or fittings or services and cannot verify they are in working order or fit for their purpose. Neither has the agent checked the legal documentation to verify the Freehold / Leasehold status of the property. Photographs are for illustration only and may depict items which are not for sale or included in the sale of the property.

Reference: **WHT250156**