



East Walk, Barnet, EN4 8JT

Asking Price: £800,000

Freehold

East Walk, Barnet, EN4 8JT

Set on a highly sought-after road, this beautifully presented four-bedroom semi-detached home enjoys an attractive outlook over a large open green space with Pymmes Brook running through it and further benefits from off-street parking and a garage.

The ground floor offers a bay-fronted reception room, an extended living room, an extended kitchen, and a guest WC. On the first floor, there are three well-proportioned bedrooms and a stylish three-piece family bathroom. The principal bedroom occupies the loft level and features a Juliet balcony along with a contemporary three-piece en suite. The property is well presented throughout and also boasts a neatly maintained rear garden, off-street parking for multiple vehicles and a garage.

Ideally located opposite open green space and within a short walk of Oak Hill Park, the house is also close to highly regarded local schools, including Brunswick Park and Monkfrith Primary Schools. Hampden Square, with its range of shops and amenities, is within easy walking distance, while excellent transport links provide convenient access to Southgate Underground Station.

- **CHAIN FREE * 1443 SQFT**
- **FOUR BEDROOMS**
- **EXTENDED KITCHEN & LIVING ROOM**
- **TWO RECEPTION ROOMS**
- **TWO BATHROOMS & ADDITIONAL W/C**
- **OFF STREET PARKING & GARAGE**
- **CLOSE TO HIGHLY REGARDED SCHOOLS**
- **OPPOSITE GREEN SPACE**
- **CLOSE TO HAMPDEN SQUARE SHOPS**
- **COUNCIL TAX BAND E**



East Walk, East Barnet, Barnet, EN4

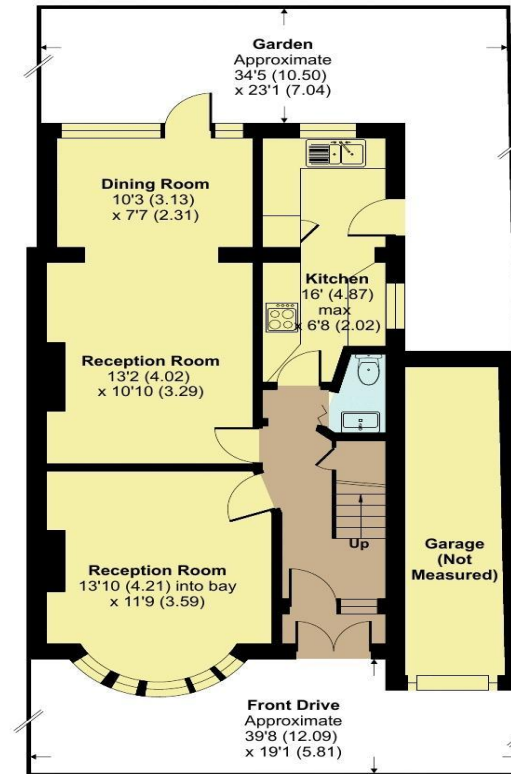
Approximate Area = 1387 sq ft / 128.8 sq m

Limited Use Area(s) = 56 sq ft / 5.2 sq m

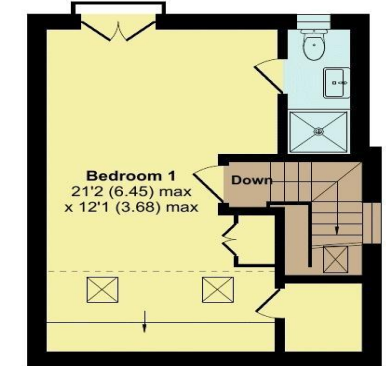
Total = 1443 sq ft / 134 sq m

For identification only - Not to scale

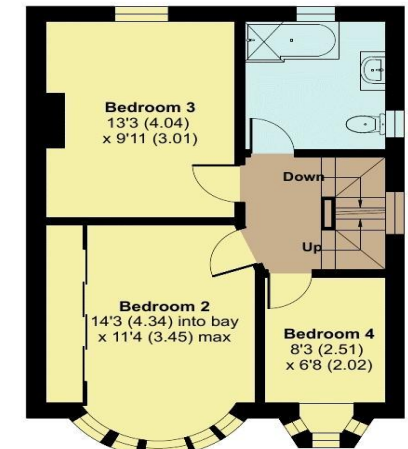
Denotes restricted head height



**GROUND FLOOR
APPROX FLOOR
AREA 57.7 SQ M
(622 SQ FT)**



**SECOND FLOOR
APPROX FLOOR
AREA 26.9 SQ M
(290 SQ FT)**



**FIRST FLOOR
APPROX FLOOR
AREA 44.1 SQ M
(475 SQ FT)**

Floor plan produced in accordance with RICS Property Measurement 2nd Edition, Incorporating International Property Measurement Standards (IPMS2 Residential). © ncthecom 2025. Produced for Hunters - Barnet & Whetstone. REF: 1450733











Score	Energy rating	Current	Potential
92+	A		
81-91	B		
69-80	C		77 C
55-68	D	63 D	
39-54	E		
21-38	F		
1-20	G		

Hunters Whetstone

99 Russell Lane
Whetstone
N20 0BA

T: 020 8368 7138

E: info@hunters-whetstone.co.uk

www.hunters-whetstone.co.uk

Disclaimer

The agent has not checked any apparatus, fixtures or fittings or services and cannot verify they are in working order or fit for their purpose. Neither has the agent checked the legal documentation to verify the Freehold / Leasehold status of the property. Photographs are for illustration only and may depict items which are not for sale or included in the sale of the property.