



**Salisbury Road, Barnet, EN5**

**Asking Price: £975,000**

*Freehold*

With expansive glazing throughout and everyday living accommodation arranged over two floors, this end of terrace townhouse presents an excellent opportunity for a growing family to enjoy the convenience of High Barnet living and the wealth of facilities it offers. These include outstanding local schooling, High Street shopping, and a commutable tube station, all within a short walk.

Architecturally designed by Allford Hall Monaghan Morris and recently refurbished throughout to a high specification — with interiors by award-winning Houzz designer Caroline Couzens — this beautifully presented home can be accessed either via the upper ground floor entrance or from the lower ground floor patio, which leads into an entrance hall featuring built-in coat and shoe cupboards with seating. The living accommodation is thoughtfully arranged over two floors, with a newly fitted kitchen/breakfast room enjoying a southerly aspect, large windows, and doors opening onto a 60ft south-east-facing garden. This space flows into an open plan family room, creating an ideal setting for modern family life. The lower ground floor also benefits from a cloakroom/WC. A relaxing upper ground floor lounge provides additional living space, perfect for retreating or entertaining. The home features smart home technology throughout, including automated heating and blinds, while ultrafast 3 Gbps broadband — among the fastest residential speeds available in the UK — makes it an exceptional environment for working from home.

To the first floor are three well-proportioned bedrooms and a refurbished family bathroom, while the top floor hosts a spacious principal bedroom featuring a full-width span of windows, fitted wardrobes, and a contemporary en-suite shower room.

Situated in Barnet Town Centre, on the edge of picturesque Green Belt countryside, the property offers easy access to charming country pubs and restaurants. It lies within the catchment area of some of the UK's most highly regarded schools, including Foulds and Christchurch Primary Schools, QE Boys' Grammar, QE Girls' Secondary, and Ark Pioneer Academy.

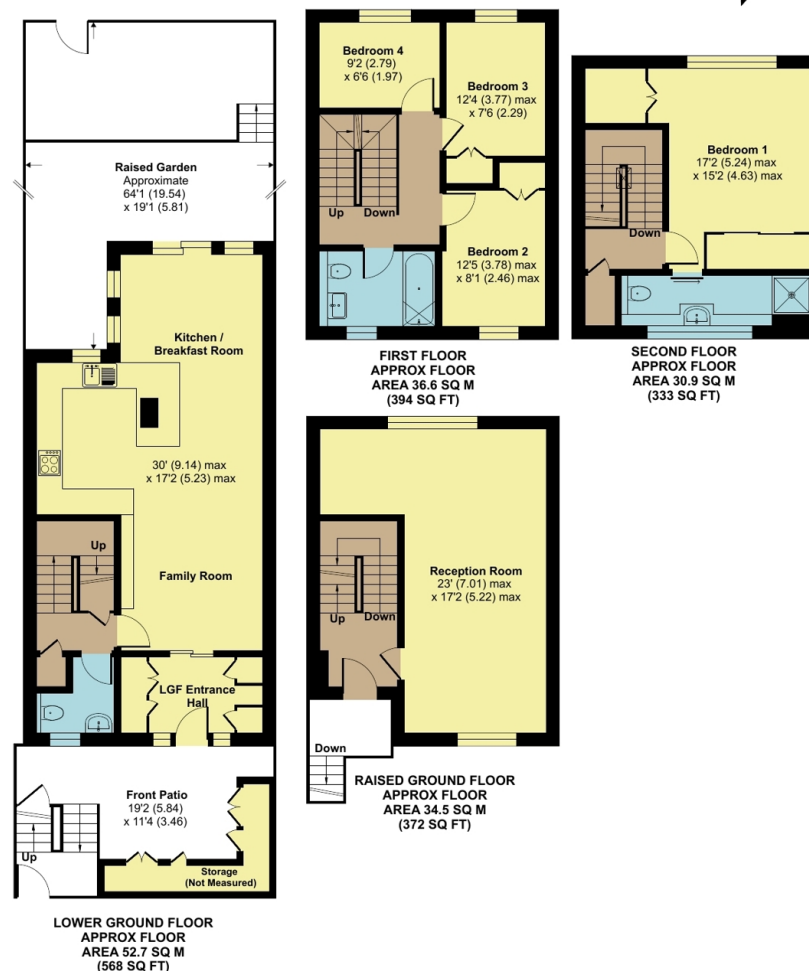
The home is also close to Cockfosters and High Barnet, providing a wide range of amenities such as coffee shops, Gail's Bakery, The Spires Shopping Centre (home to Waitrose, H&M, and Anytime Fitness), and a vibrant Saturday food market. Excellent transport links are close at hand, with the London Underground (Northern Line) just a short walk away, offering direct access to King's Cross in approximately 25 minutes — ideal for commuters and West End visitors alike.

This is a fantastic opportunity to secure a spacious family home in one of Barnet's most desirable locations.

## Salisbury Road, Barnet, EN5

Approximate Area = 1667 sq ft / 154.8 sq m

For identification only - Not to scale



Floor plan produced in accordance with RICS Property Measurement 2nd Edition, Incorporating International Property Measurement Standards (IPMS2 Residential). © ncheccom 2026. Produced for Hunters - Barnet & Whetstone. REF: 1402729











**FAMILY TOWN HOUSE**  
**FOUR BEDROOMS**  
**LOUNGE**  
**KITCHEN BREAKFAST ROOM**  
**FAMILY ROOM**  
**FAMILY BATHROOM**  
**EN-SUITE**  
**RAISED & LGF ENTRANCES**  
**60ft SOUTHERLY ASPECT GARDEN**  
**LGF FRONTAGE**  
**LGF ENTRANCE LOBBY**

Score	Energy rating	Current	Potential
92+	A		
81-91	B		
69-80	C	73 C	76 C
55-68	D		
39-54	E		
21-38	F		
1-20	G		

## Hunters Barnet

41 High Street  
 High Barnet  
 Barnet  
 Hertfordshire  
 EN5 5UW

T: 020 8441 3377 (sales) | 8441 6969 (lettings)

E: [info@hunters-barnet.co.uk](mailto:info@hunters-barnet.co.uk)

[www.hunters-barnet.co.uk](http://www.hunters-barnet.co.uk)

### Disclaimer

The agent has not checked any apparatus, fixtures or fittings or services and cannot verify they are in working order or fit for their purpose. Neither has the agent checked the legal documentation to verify the Freehold / Leasehold status of the property. Photographs are for illustration only and may depict items which are not for sale or included in the sale of the property.

Reference: BRN250377