



Leicester Road, Barnet, Hertfordshire, EN5

Asking Price: £240,000

Leasehold

Glenwood House, Leicester Road, Barnet, Hertfordshire, EN5

This chain free one bedroom ground floor flat benefits from its own private entrance and is set to the front of a well-maintained, small development. The accommodation comprises a bay-fronted reception room, a separate kitchen, a double bedroom, and a three-piece bathroom.

Conveniently located within walking distance of New Barnet Mainline Station, offering direct services to London King's Cross and Moorgate, as well as High Barnet Underground Station (Northern Line), the property provides excellent transport links for commuters.

A range of local amenities are close by, including a Sainsbury's supermarket and New Barnet's recently opened leisure centre, all within easy walking distance.

- **GROUND FLOOR PURPOSE BUILD FLAT**
- **OWN PRIVATE ENTRANCE**
- **ALLOCATED PARKING SPACE**
- **SPACIOUS RECEPTION ROOM**
- **SEPARATE KITCHEN**
- **BEDROOM**
- **BATHROOM**
- **GAS CENTRAL HEATING**
- **DOUBLE GLAZING**
- **CHAIN FREE**

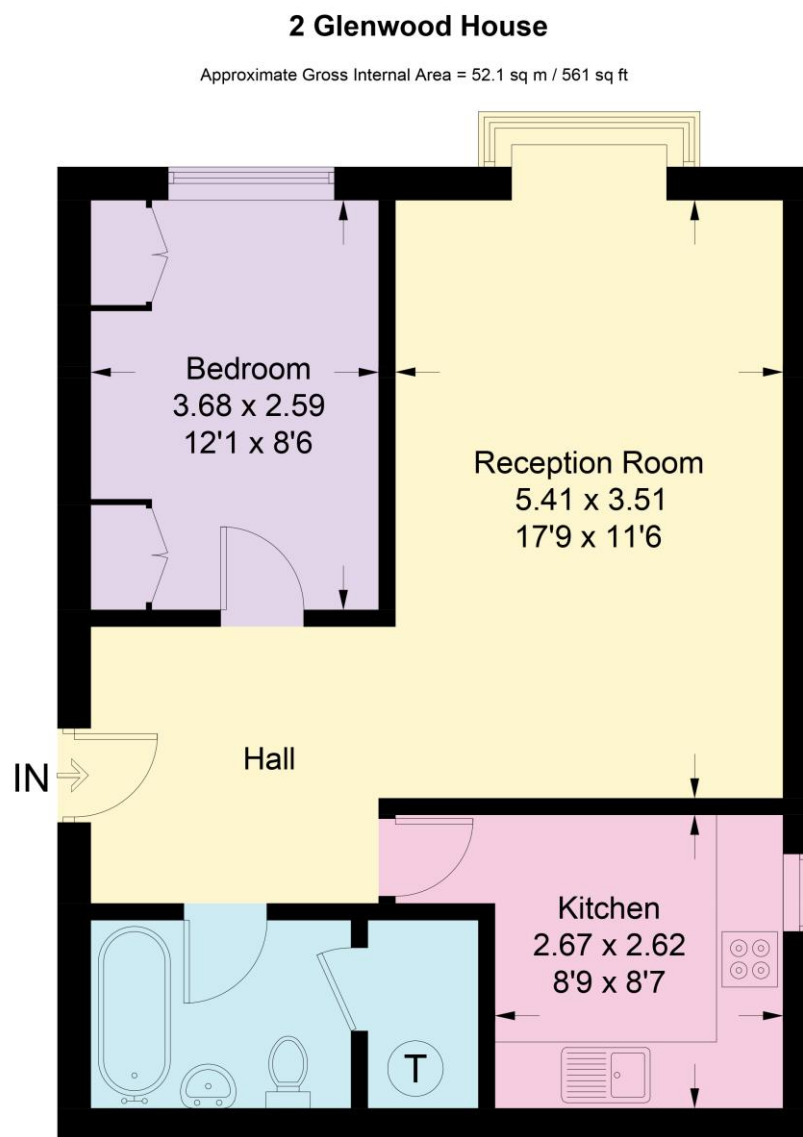


Illustration for identification purposes only, measurements are approximate, not to scale. Fourlabs.co © (ID1284752)







Score	Energy rating	Current	Potential
92+	A		
81-91	B		
69-80	C	71 C	71 C
55-68	D		
39-54	E		
21-38	F		
1-20	G		

Hunters Barnet

41 High Street
High Barnet
Barnet
Hertfordshire
EN5 5UW

T: 020 8441 3377 (sales) | 8441 6969 (lettings)

E: info@hunters-barnet.co.uk

www.hunters-barnet.co.uk

Disclaimer

The agent has not checked any apparatus, fixtures or fittings or services and cannot verify they are in working order or fit for their purpose. Neither has the agent checked the legal documentation to verify the Freehold / Leasehold status of the property. Photographs are for illustration only and may depict items which are not for sale or included in the sale of the property.

Reference: BRN260065