



Highbrook House, 49 Quayle Crescent, N20

Asking Price: £950,000
Leasehold

Highbrook House, 49 Quayle Crescent, London, Greater London, N20

An exceptional three-bedroom penthouse apartment set in a prime Whetstone High Road location, offering superb panoramic views and an impressive private roof terrace ideal for entertaining and outdoor living.

The property features a spacious open-plan kitchen and living room filled with natural light, creating a stylish and contemporary living space. There are three well-proportioned bedrooms, two modern bathrooms and an abundance of practical storage with large built-in cupboards throughout.

Residents benefit from lift to all floors, gated underground parking and the convenience of an on-site porter, adding both security and ease to everyday living.

A rare opportunity to acquire a stunning penthouse apartment combining generous accommodation, outstanding outdoor space and within close proximity to Totteridge & Whetstone underground station and its array of shops, bars & cafes including, Waitrose, M&S & Boots

- **PENTHOUSE FLAT**
- **THREE BEDROOMS**
- **SUPERB VIEWS**
- **LARGE PRIVATE ROOF TERRACE**
- **OPEN PLAN KITCHEN LIVING ROOM**
- **TWO BATHROOMS**
- **LARGE STORAGE CUPBOARDS**
- **GATED UNDERGROUND PARKING**
- **ON SITE PORTER**
- **HIGH ROAD LOCATION**

Approximate Gross Internal Area = 119.3 sq m / 1284 sq ft

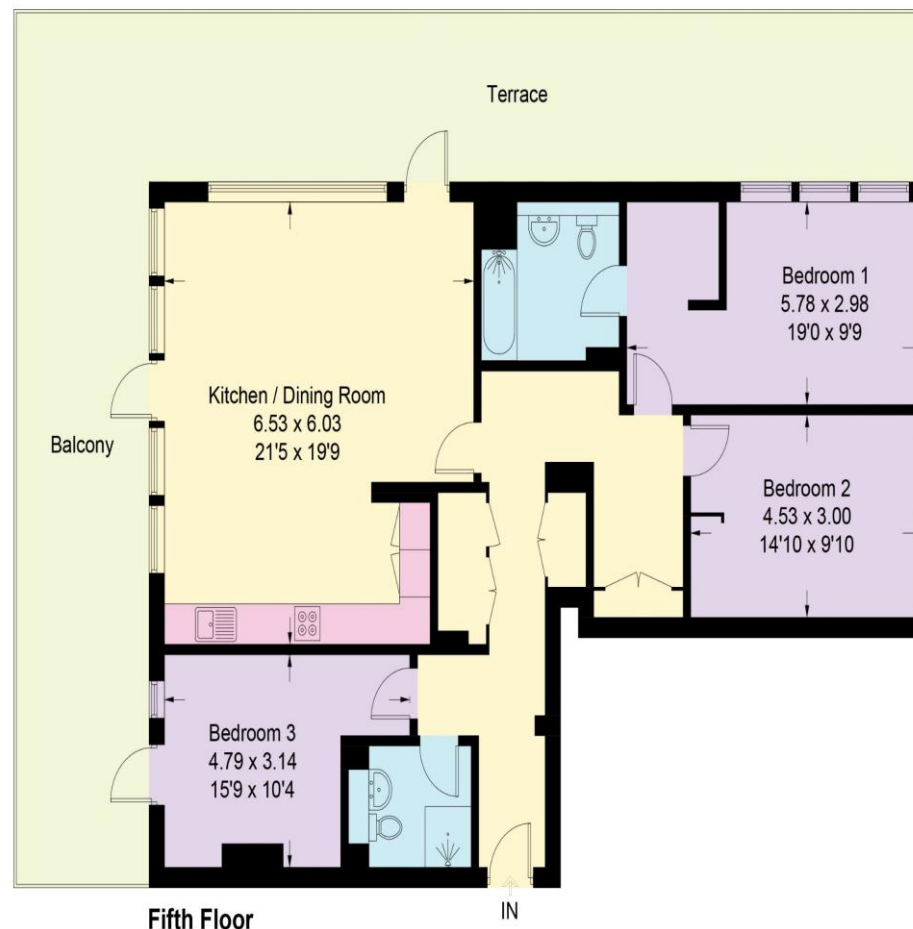
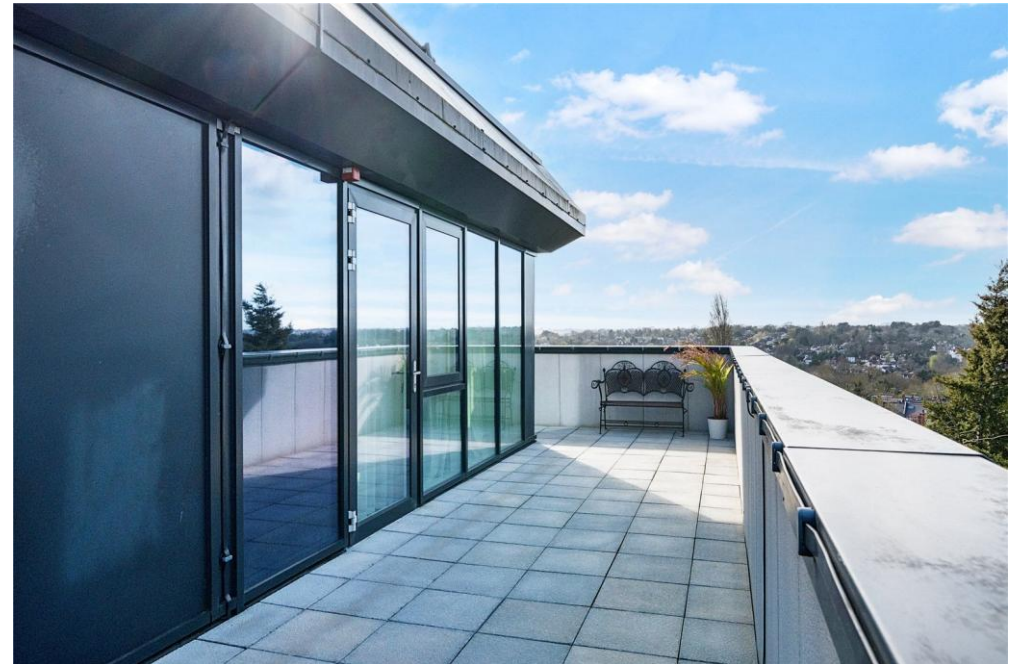


Illustration for identification purposes only, measurements are approximate, not to scale. Fourlabs.co © (ID1301087)











Score	Energy rating	Current	Potential
92+	A		
81-91	B	85 B	85 B
69-80	C		
55-68	D		
39-54	E		
21-38	F		
1-20	G		

Hunters Barnet

99 Russell Lane
London
N20 0BA

T: 0208 368 7138

E: info@hunters-barnet.co.uk

www.hunters-barnet.co.uk

Disclaimer

The agent has not checked any apparatus, fixtures or fittings or services and cannot verify they are in working order or fit for their purpose. Neither has the agent checked the legal documentation to verify the Freehold / Leasehold status of the property. Photographs are for illustration only and may depict items which are not for sale or included in the sale of the property.

Reference: **WHT260016**