



Brunswick Crescent, London, N11

Guide Price: £749,950

Freehold

Brunswick Crescent, London, N11

Beautifully reimagined and finished to an exceptional standard throughout, this impressive four-bedroom Victorian home effortlessly combines contemporary living with timeless style.

The attractive exterior creates an immediate sense of quality, while inside, thoughtfully designed interiors provide a bright and welcoming atmosphere. The ground floor has been carefully arranged to maximise both space and natural light, centred around a stunning open-plan kitchen, dining and living area that serves as the heart of the home. This sociable space opens directly onto the rear garden through expansive bi-fold doors, creating a seamless transition between indoor and outdoor living.

The kitchen has been designed with both functionality and aesthetics in mind, offering an abundance of storage, generous worktop space and high-specification integrated appliances.

Arranged over the upper floors are four well-proportioned bedrooms, offering flexibility for growing families, home working or guest accommodation. There are two stylish bathrooms which have been finished with elegant fixtures and contemporary detailing.

Every aspect of the property has been carefully considered, from the high-quality finishes and bespoke design features to the cohesive interior styling that runs throughout. The result is a turnkey home that delivers comfort, sophistication and practicality in equal measure.

- CHAIN FREE * 1315 SQFT
- FOUR BEDROOM HOUSE
- IMMACULATLEY PRESENTED THROUGHOUT
- NEWLY RE-BUILT
- HIGH END FINISH
- PREMIUM APPLIANCES
- CHEVRON FLOORING
- TWO BATHROOMS
- BI-FOLD DOORS TO GARDEN
- GOOD TRANSPORT LINKS



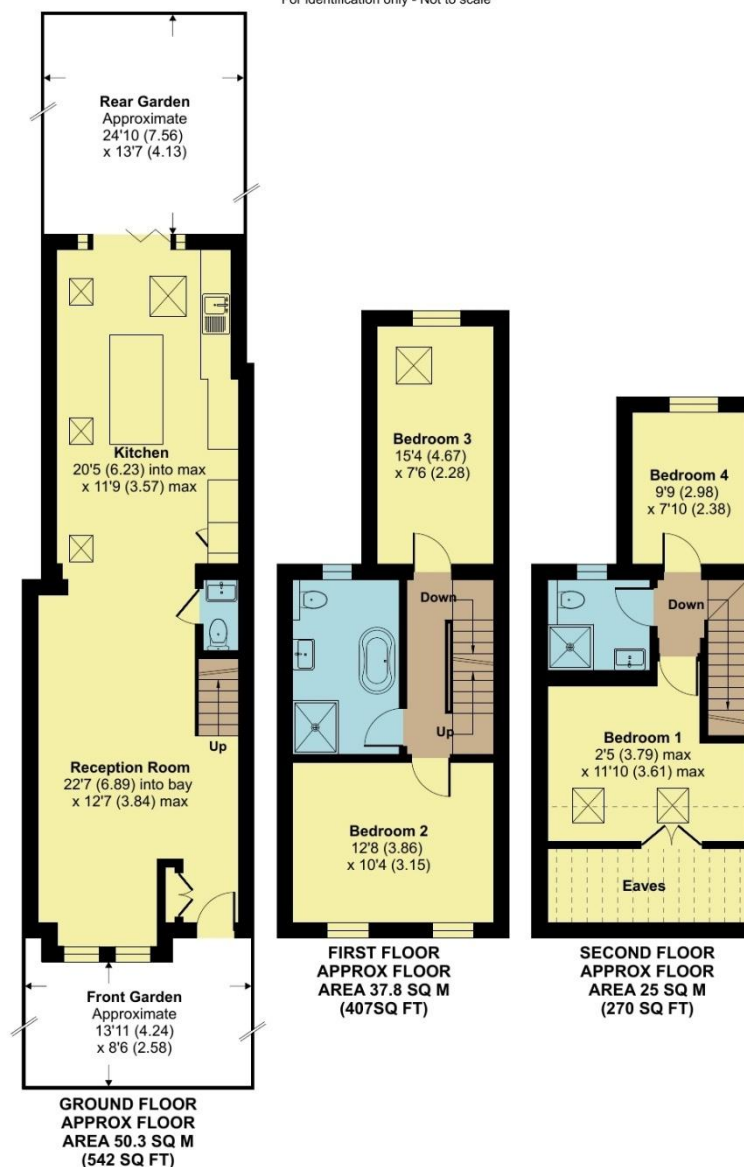
Brunswick Crescent, London, N11

Approximate Area = 1219 sq ft / 113.2 sq m

Limited Use Area(s) = 96 sq ft / 8.9 sq m

Total = 1315 sq ft / 122.1 sq m

For identification only - Not to scale



Floor plan produced in accordance with RICS Property Measurement 2nd Edition, Incorporating International Property Measurement Standards (IPMS2 Residential) © 2022









Score	Energy rating	Current	Potential
92+	A		
81-91	B		
69-80	C	75 C	80 C
55-68	D		
39-54	E		
21-38	F		
1-20	G		

Hunters

99 Russell Lane
London
N20 0BA

T: 0208 368 7138

E: info@hunters-barnet.co.uk

www.hunters-barnet.co.uk

Disclaimer

The agent has not checked any apparatus, fixtures or fittings or services and cannot verify they are in working order or fit for their purpose. Neither has the agent checked the legal documentation to verify the Freehold / Leasehold status of the property. Photographs are for illustration only and may depict items which are not for sale or included in the sale of the property.

Reference: WHT260081